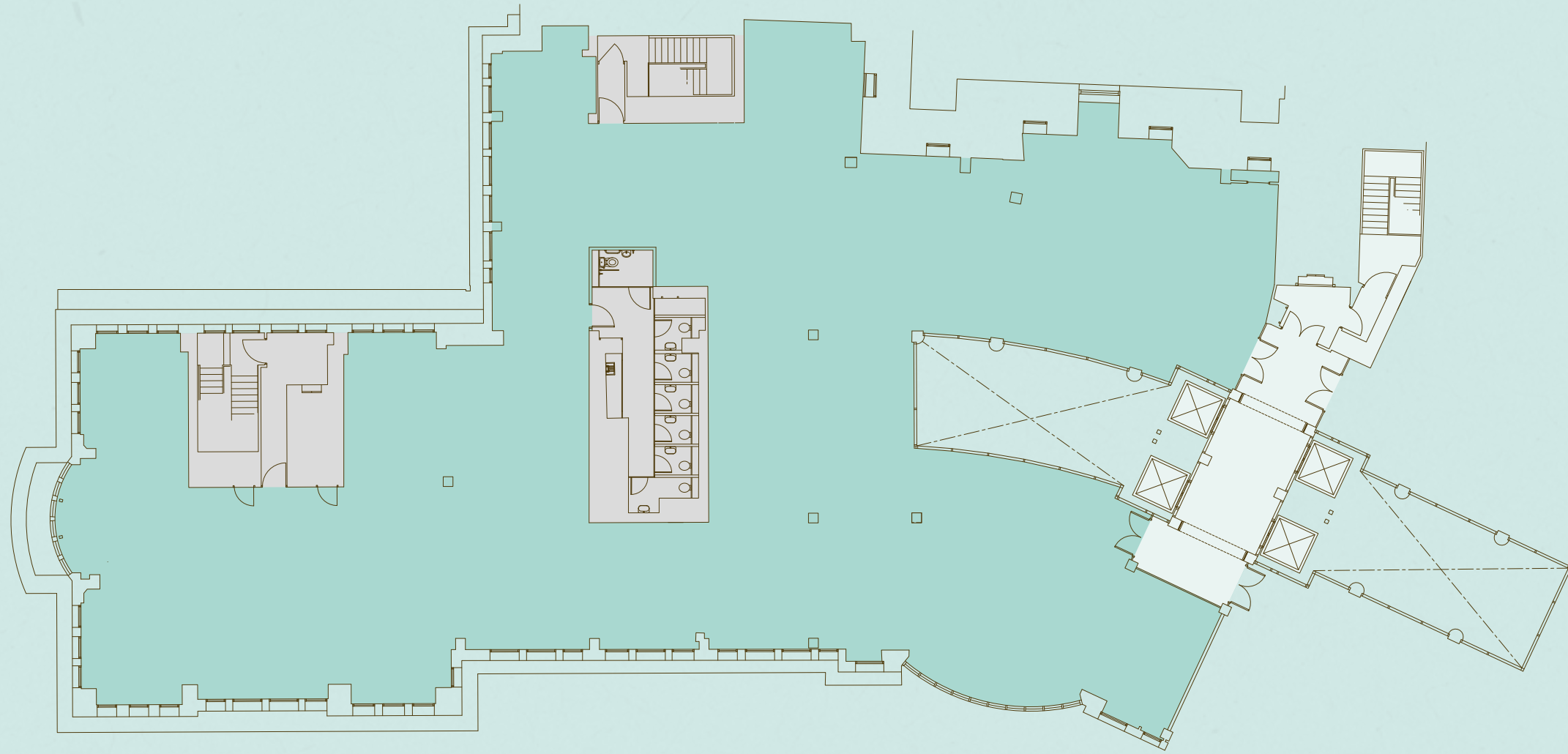


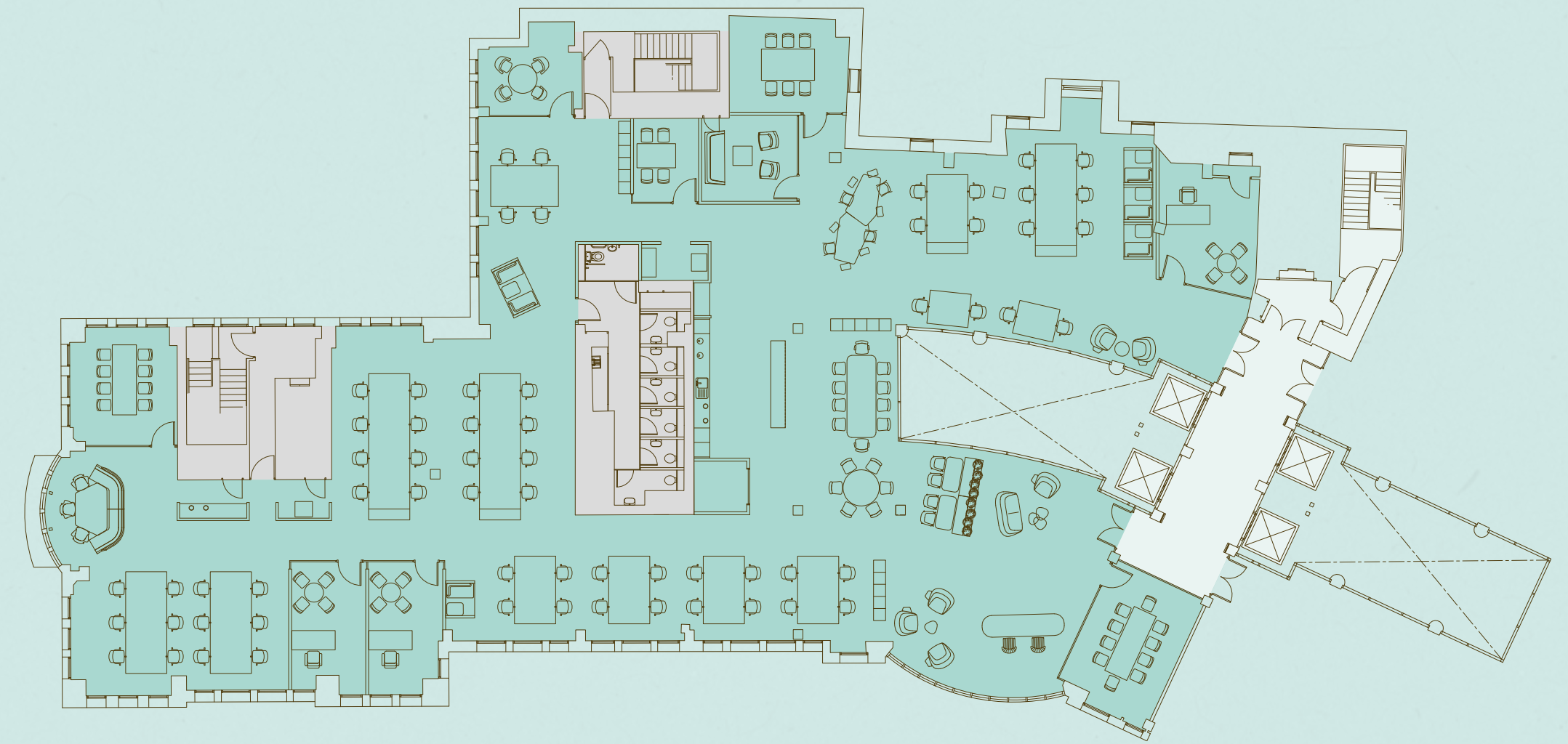


EXCHEQUER COURT
33 ST MARY AXE | LONDON EC3

PART 6TH FLOOR PLAN
8,479 SQ. FT / 788 SQ. M



PART 6TH FLOOR INDICATIVE SPACE PLAN
8,479 SQ. FT / 788 SQ. M



Plan not to scale. Indicative use only.

● Office ● Arrival ● Core

Open plan desks	68	Touchdown spaces	08
10 person meeting room	01	Collaboration areas	02
08 person meeting room	01	Phone booths	05
06 person meeting room	01	Kitchenette and breakout	01
04 person meeting room	03	Reception	01